



**solavanti** lighting



**PERFORMANCE**<sup>10</sup>

**LTS**<sup>®</sup>  
LIGHT & LUMINAIRES

## Monza



Monza 644



Monza Eco 645

## Twin



Twin 645

## Weak



Weak 10 650



Weak 20 651

## Kera



Kera 653

## Lowanda



Lowanda 657

## Decco



Decco 1000 657



Decco 3000 658



Decco 2000 658

## Roccy



Roccy 661

## Torpedo



Torpedo 662

# Wall Luminaires

Lincox



Lincox 641

Milano XL



Milano 643

Imola



Imola 646

Wall



Wall 648



Wall 648

Ringo



Ringo 655

Decco



Decco 4000 656

Roma



Roma 659



Roma XL 659

Piazza



stainless steel

Piazza100 660

WELScene®



WEL 665



SCA 666

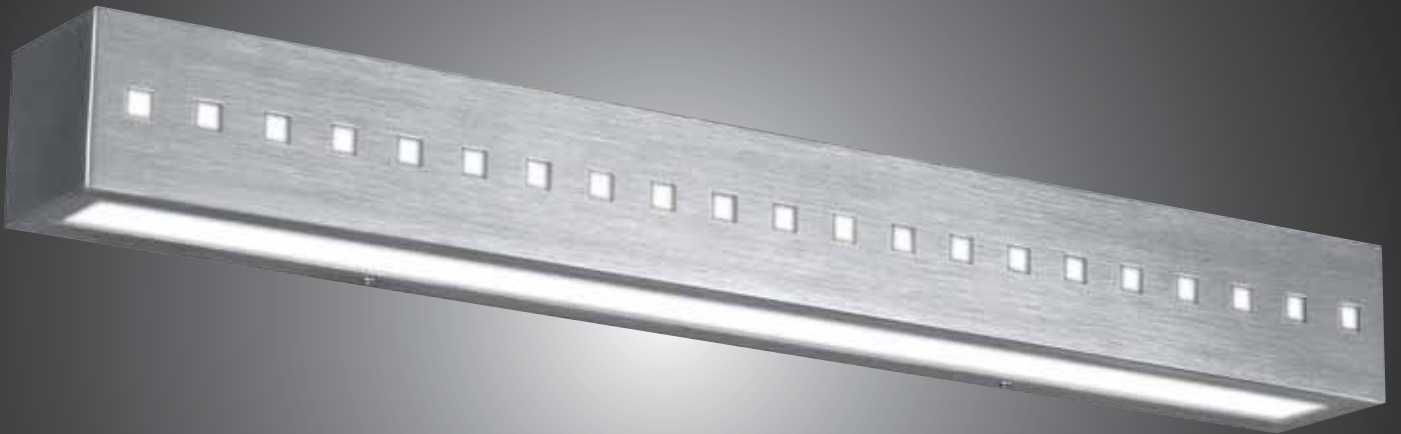


Scene® 667



Scene® 667

# Linnox



Linnox wall luminaires are made from stainless steel. Decorative patterns according to designer's specifications.

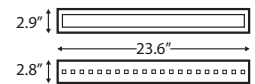
Direct-indirect beam. Linnox appeals and attracts attention.



**LIN 101 | wall luminaire | T16 | light squares**

- ☒ wall luminaire for direct-indirect illumination, design with light squares
- ☒ light distribution: 50% direct, 50% indirect
- ☒ luminaire housing made from stainless steel or powder-coated metal
- ☒ white glossy acrylic
- ☒ reflector made from high-grade aluminium with matt structure
- ☒ ECG integral, 3-pole terminal block
- ☒ color: silver, stainless steel, RAL

	120V 60 Hz		
--	---------------	--	--

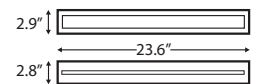


	LM	Wattage	Order No.	LVK		lb
	T16 / G5	2 x24 W	<a href="#">LIN 101.224</a>	501	ECG	5.3

**LIN 102 | wall luminaire | T16 | light bar**

- ☒ wall luminaire for direct-indirect illumination, design with light bar

	120V 60 Hz		
--	---------------	--	--



	LM	Wattage	Order No.	LVK		lb
	T16 / G5	2 x24 W	<a href="#">LIN 102.224</a>	501	ECG	5.3



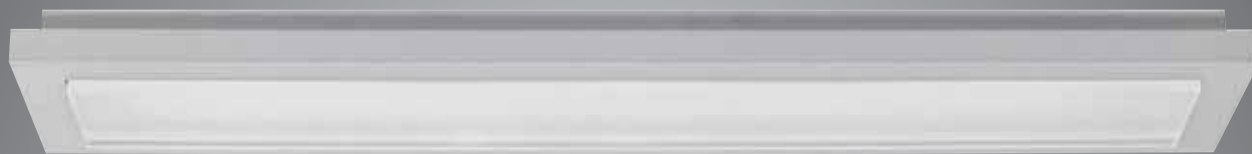
LT'S Showroom



# Milano XL

Milano XL Wall luminaires for direct or direct-indirect illumination. The housing is constructed from aluminium, the light insert from high-quality prismatic acrylic.

Elegant and smart, perfect finish and equipped with the latest lighting technique. With these assets Milano XL luminaires meet the highest demands.



☑soft and low-reflection light distribution  
 ☑luminaire housing made from high-grade aluminium, frosted acrylic

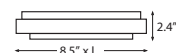
☑ECG integral, luminaire ready for connection  
 ☑color: silver, white



**Milano 30 | wall luminaire | direct**

☑wall luminaire for direct illumination

ECG 120V 60 Hz IP20 CE



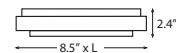
LM	Wattage	Order No.	LVK	⚡	lb	Length L
	2 x36 W	<a href="#">MIL 30.2360</a>	560	ECG	9.5	20.9"
	2 x55 W	<a href="#">MIL 30.2550</a>	560	ECG	10.6	25.6"
	2 x39 W	<a href="#">MIL 30.2390</a>	560	ECG	14.3	37.4"
		<a href="#">MIL 30.2390 DIM/1- 10</a>	560	ECG dim.	13.6	37.4"
		<a href="#">MIL 30.2390 DIM/DIG</a>	560	ECG dim.	13.6	37.4"



**Milano 31 | wall luminaire | direct-indirect**

☑wall luminaire for direct-indirect illumination, light distribution: 52% direct, 48% indirect

ECG 120V 60 Hz IP20 CE



LM	Wattage	Order No.	LVK	⚡	lb	Length L
	2 x36 W	<a href="#">MIL 31.2360</a>	561	ECG	8.6	20.9"
	2 x55 W	<a href="#">MIL 31.2550</a>	561	ECG	9.7	25.6"
	2 x39 W	<a href="#">MIL 31.2390</a>	561	ECG	14.1	37.4"
		<a href="#">MIL 31.2390 DIM/1- 10</a>	561	ECG dim.	13.4	37.4"
		<a href="#">MIL 31.2390 DIM/DIG</a>	561	ECG dim.	13.4	37.4"

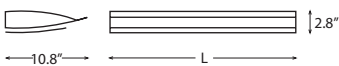


# Monza

Monza Wall luminaires for offices, waiting rooms, conference rooms etc. The high proportion of indirect light creates daylight effect, the direct share cares for atmosphere.


- ☑ wall luminaire for direct-indirect illumination, light distribution: 15% direct, 85% indirect
- ☑ asymmetrical luminaire made from metal
- ☑ white light diffuser, perforated,

- made from high-grade aluminium backed with matt foil
- ☑ ECG integral, 3-pole terminal block
- ☑ various covers available as accessories
- ☑ color: iron glimmer light-grey, RAL

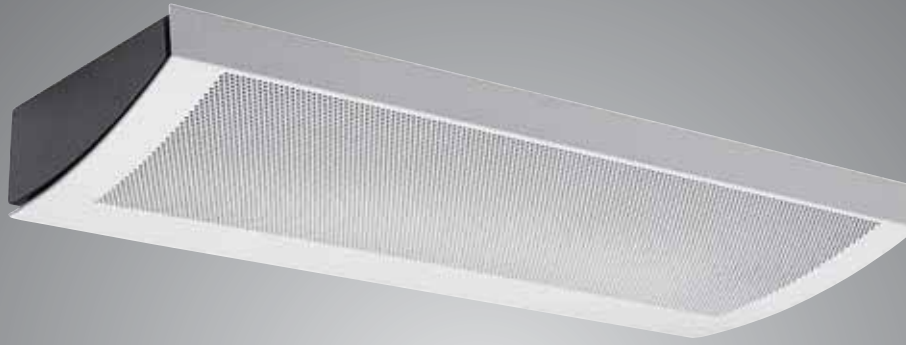


## Monza | wall luminaire



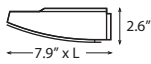
LM	Wattage	Order No.	LVK	ECG	lb	Length L
	2 x 36 W	MON 2361	566	ECG	6.4	19.4"
		MON 2361 DIM/1- 10	566	ECG	7.7	19.4"
		MON 2361 DIM/DIG	566	ECG	7.3	19.4"
	2 x 55 W	MON 2551	566	ECG	7.9	24.2"
		MON 2551 DIM/1- 10	566	ECG	8.8	24.2"
		MON 2551 DIM/DIG	566	ECG	8.4	24.2"

- Accessories
- Clear cover for MON 2361: [MON 2361 AK](#)
  - Opal cover for MON 2361: [MON 2361 AO](#)
  - Clear cover for MON 2551: [MON 2551 AK](#)
  - Opal cover for MON 2551: [MON 2551 AO](#)



- ☒ wall luminaire for direct-indirect illumination, light distribution: 15% direct, 85% indirect
- ☒ luminaire unit made from metal, front side iron glimmer light-grey
- ☒ matt white light diffuser, perforated,

- made from high-grade metal backed with matt foil
- ☒ ECG integral, 3-pole terminal block
- ☒ various covers available as accessories



**Monza Eco | wall luminaire**



LM	Wattage	Order No.	LVK	ECG	lb	Length L
TC-L/ 2G 11	2 x36 W	<a href="#">MON 2360 ECO</a>	566	ECG	7.7	18.1"
	2 x55 W	<a href="#">MON 2550 ECO</a>	566	ECG	9.2	22.8"
	2 x55 W	<a href="#">MON 2550 ECO DIM/1- 10</a>	566	ECG dim.	9.2	22.8"
	2 x55 W	<a href="#">MON 2550 ECO DIM/DIG</a>	566	ECG dim.	9.2	22.8"

- Accessories Clear cover for MON 2360 ECO: [MON 2360 ECO AK](#)  
 Opal cover for MON 2360 ECO: [MON 2360 ECO AO](#)  
 Clear cover for MON 2550 ECO: [MON 2550 ECO AK](#)  
 Opal cover for MON 2550 ECO: [MON 2550 ECO AO](#)



- ° wall luminaire for direct or indirect illumination
- ° luminaire unit made from aluminium and polycarbonate, wall bracket made from metal

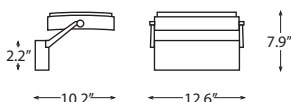
- ° luminaire unit pivots through 315°
- ° light diffuser made from clear acrylic with faceted structure on the inside
- ° ECG integral, 3-pole terminal block
- ° color: polar-metallic, white, RAL

**Twin | wall luminaire**



LM	Wattage	Order No.	LVK	ECG	lb
TC-F/2G10	2 x36 W	<a href="#">TWIN 2. 236</a>	535	ECG	7.5

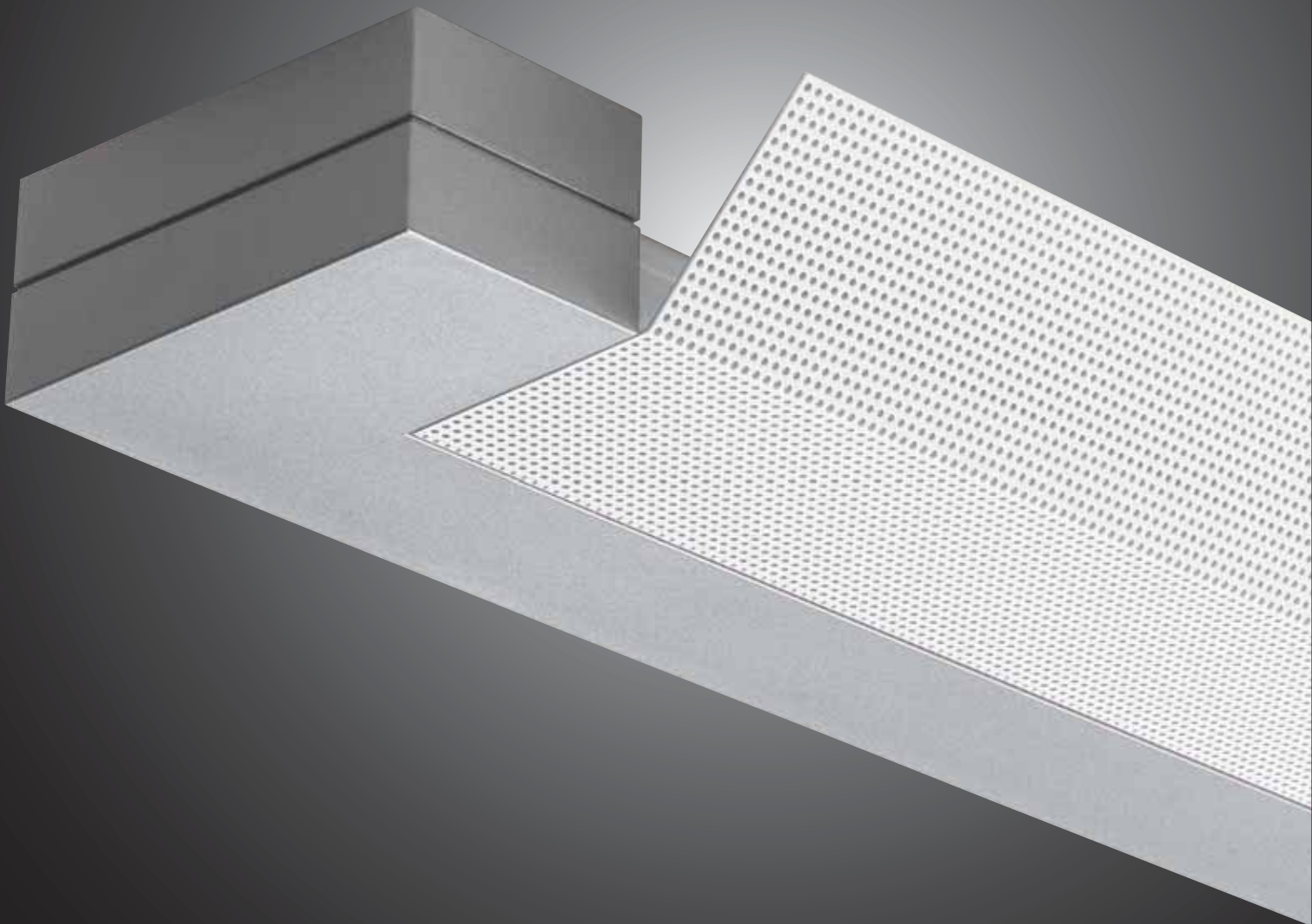
- Accessories (1) Vane louvre: [ZBW70](#)



# Imola

Imola Wall luminaires are available in several colour combinations.

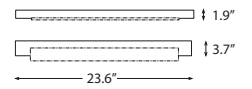
Clear and compact design. Imola is a powerful wall luminaire with interesting light effects.





**IMO | wall luminaire | diffuser perforated**

- ☒ wall luminaire for direct-indirect illumination, diffuser perforated
- ☒ light distribution: 15% direct, 85% indirect
- ☒ easy direct mounting via wall bracket
- ☒ housing made from UV- and heat-resistant polycarbonate
- ☒ diffuser made from high-grade aluminium
- ☒ ECG integral, luminaire ready for connection

 ECG	120V 60 Hz
 IP20	 CE



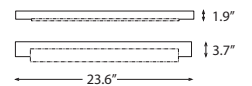
LM	Wattage	Housing/Diffuser	Order No.		lb	LVK	
	TC-L / 2G11	1 x55 W	silver/silver	<a href="#">IMO 1551/W1</a>	ECG	4.0	493
			white/white	<a href="#">IMO 1551/W2</a>	ECG	4.0	493
			white/silver	<a href="#">IMO 1551/W3</a>	ECG	4.0	493
			silver/white	<a href="#">IMO 1551/W4</a>	ECG	4.0	493



also available as dimming versions

**IMO | wall luminaire | diffuser not perforated**

- ☒ wall luminaire for indirect illumination, diffuser not perforated
- ☒ easy direct mounting via wall bracket
- ☒ housing made from UV- and heat-resistant polycarbonate
- ☒ diffuser made from high-grade aluminium
- ☒ ECG integral, luminaire ready for connection

 ECG	120V 60 Hz
 IP20	 CE



LM	Wattage	Housing/Diffuser	Order No.		lb	LVK	
	TC-L / 2G11	1 x55 W	silver/silver	<a href="#">IMO 1552/W1</a>	ECG	4.0	493
			white/white	<a href="#">IMO 1552/W2</a>	ECG	4.0	493
			white/silver	<a href="#">IMO 1552/W3</a>	ECG	4.0	493
			silver/white	<a href="#">IMO 1552/W4</a>	ECG	4.0	493

also available as dimming versions

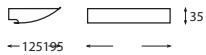


# Wall



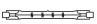
- ☑ luminaire for direct-indirect illumination, asymmetrical light distribution
- ☑ luminaire housing made from metal
- ☑ reflector made from anodised aluminium, safety glass

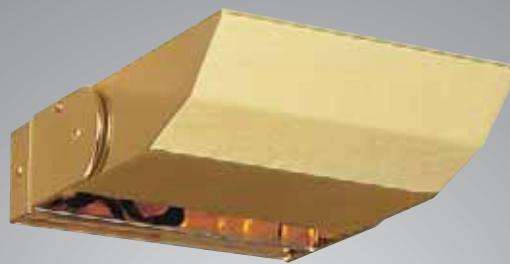
- ☑ luminaire ready for connection
- ☑ Not suitable for mounting on flammable material.
- ☑ color: chrome, white



## SAW 200 | wall luminaire

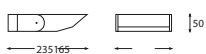


LM	Wattage	Order No.	lb
 QT-DE11/12 / R7s Contact gap: 4.5"	200 W	SAW 200	1.1




- ☑ luminaire for indirect illumination, tiltable, asymmetrical light distribution
- ☑ luminaire housing made from metal
- ☑ reflector made from anodised aluminium, safety glass

- ☑ luminaire ready for connection
- ☑ Not suitable for mounting on flammable material.
- ☑ color: gold plated, black, white



## SAW 500 | wall luminaire



LM	Wattage	LVK	Order No.	lb
 QT-DE11/12 / R7s Contact gap: 4.5"	max. 300 W	461	SAW 500	1.5



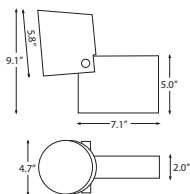
# Waek



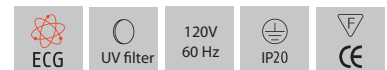
Mercedes, Freiburg

- ☑ wall luminaire for direct or indirect illumination, according to mounting
- ☑ light head pivots through 15°
- ☑ light head made from high-grade aluminium, wall bracket made from metal
- ☑ specular reflector made from highest-grade aluminium

- ☑ PRI reflector technique for glare-free light and maximum luminous efficiency
- ☑ lamp position vertical
- ☑ ECG integral, 3-pole terminal block
- ☑ color: silver, white



## ■ WAEK 10 | wall luminaire



LM	Wattage	Beam Angle	Order No.	LVK	Light Type	lb
HIT-CE / G 12	70 W	15°	<a href="#">WAEK 10.70.00</a>	143	ECG	4.6
		40° PRI	<a href="#">WAEK 10.70.01</a>	143	ECG	4.6
		60° PRI	<a href="#">WAEK 10.70.02</a>	143	ECG	4.6

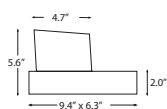
The wall luminaire which points out and can be adjusted.

Waek adapts well to the surroundings while being efficient.

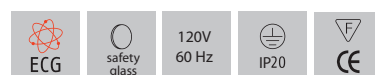


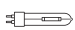
- ☑ wall luminaire for direct or indirect illumination, according to mounting
- ☑ light head fixed
- ☑ light head made from high-grade aluminium, wall bracket made from metal
- ☑ specular reflector made from

- highest-grade aluminium
- ☑ PRI reflector technique for glare-free light and maximum luminous efficiency
- ☑ lamp position vertical
- ☑ ECG integral, 3-pole terminal block
- ☑ colour combinations: light head anodised, wall housing anthracite or silver



### ■ WAEK 20 | wall luminaire



LM	Wattage	▲	Order No.	LVK	⚡	lb
 HIT-CE / G12	70 W	15°	<a href="#">WAEK 20.70.00</a>	143	ECG	4.8
		40° PRI	<a href="#">WAEK 20.70.01</a>	143	ECG	4.8
		60° PRI	<a href="#">WAEK 20.70.02</a>	143	ECG	4.8



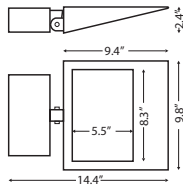
# Kera

Kera are powerful Uplights. Elegant in design they adapt well to any architecture and at the same time having a striking effect.

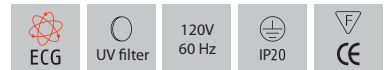


- ☒ wall luminaire for indirect illumination
- ☒ luminaire head adjustable up to max. 80°
- ☒ luminaire head and wall bracket made from metal
- ☒ reflector made from high-grade aluminium with matt structure

- ☒ ECG integral, 3-pole terminal block
- ☒ color: silver, white, RAL



**Kera 200 | wall luminaire**



LM	Wattage	Order No.	LVK	⚡	lb
 HIT-DE-CE / RX7s	70 W	<a href="#">KE 200.70</a>	446	ECG	5.7
HIT-DE-CE / RX7s-24	150 W	<a href="#">KE 200.150</a>	446	ECG	5.3





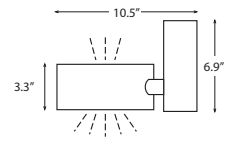
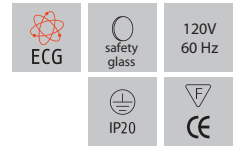
# Ringo

The direct-indirect or indirect-direct light distribution of the wall luminaire is impressive by its strong character.

The housing is constructed from aluminium with a separate power supply unit. Simple and quick mounting.


**SAW 20 | wall luminaire | direct-indirect**

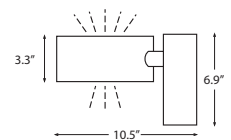
- ☒ wall luminaire for direct-indirect illumination, light distribution: 81% direct, 19% indirect
- ☒ light head made from high-grade aluminium, wall bracket made from metal
- ☒ reflector with highly polished structure made from highest-grade aluminium, for direct light portion
- ☒ safety glasses on both sides
- ☒ lamp position horizontal
- ☒ ECG integral, 3-pole terminal block
- ☒ color: silver, RAL



LM	Wattage	Order No.	⚡	lb	LVK
HIT-CE / G 12	35 W	<a href="#">SAW 20.350</a>	ECG	5.9	186
	70 W	<a href="#">SAW 20.700</a>	ECG	5.9	186

**SAW 21 | wall luminaire | direct-indirect**

- ☒ wall luminaire for direct-indirect illumination, light distribution: 19% direct, 81% indirect
- ☒ light head made from high-grade aluminium, wall bracket made from metal
- ☒ reflector with highly polished structure made from highest-grade aluminium, for indirect light portion
- ☒ safety glasses on both sides
- ☒ lamp position horizontal
- ☒ ECG integral, 3-pole terminal block
- ☒ color: silver, RAL

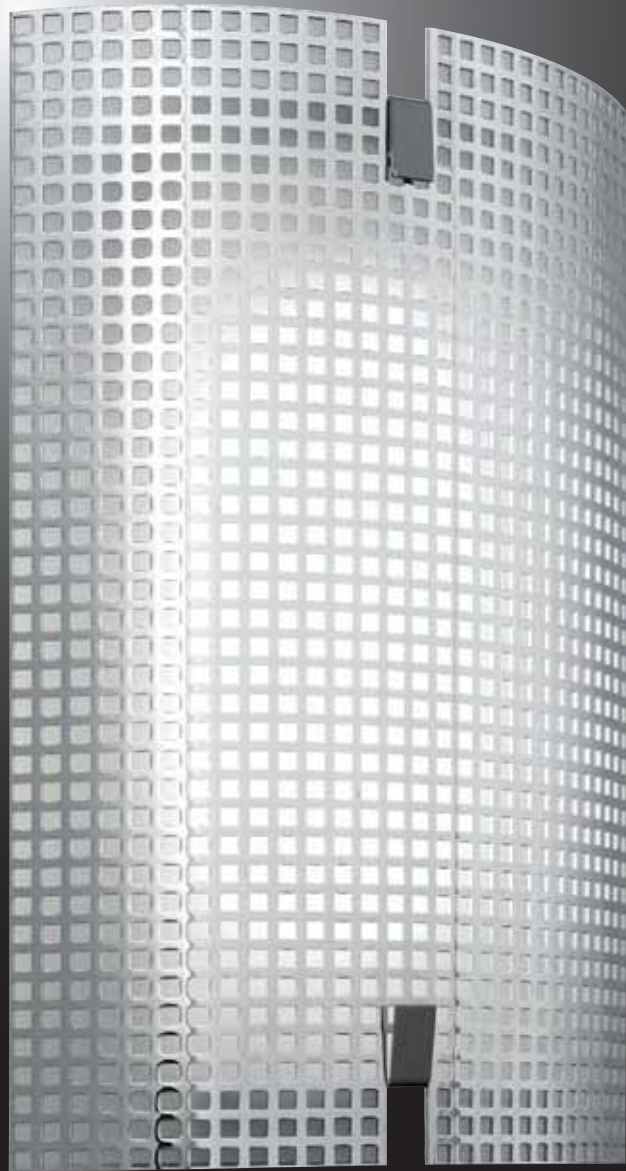


LM	Wattage	Order No.	⚡	lb	LVK
HIT-CE / G12	35 W	<a href="#">SAW 21.350</a>	ECG	5.9	185
	70 W	<a href="#">SAW 21.700</a>	ECG	5.9	185



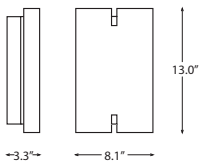
# Decco

The strong lines, the superior surfaces and the soft, low light provide the atmosphere.




- ☑ high-grade metal screen perforated with mini squares, backed with foil made from polycarbonate with velvet structure
- ☑ reflector with matt structure made from high-grade aluminium

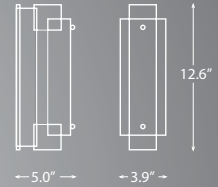
- ☑ lamp position vertical
- ☑ ECG integral, 3-pole terminal block
- ☑ colour: white, chrome



## DEC 4000 | wall luminaire



LM	Wattage	Order No.	LVK	ECG	Ib
 TC-L / 2G11	1 x18 W	DEC4000	466	ECG	5.3



- ☑ wall housing made from high-grade aluminium
- ☑ high-grade metal screen perforated, backed with foil made from polycarbonate with velvet structure

- ☑ reflector with highly polished effect made from high-grade aluminium
- ☑ lamp position vertical
- ☑ LCG integral, 3-pole terminal block

**Lowanda | wall luminaire**

120V  
60 Hz

IP20

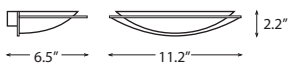
CE

LM	Wattage	Order No.	LVK	⚡	lb	Housing/Metal screen
☛ TC-D / G24d-1	2 x13 W	LOW 21301	465	LCG	4.2	black/chrome
		LOW 21302	465	LCG	4.2	black/black
		LOW 21304	465	LCG	4.2	white/white
		LOW 21305	465	LCG	4.2	silver/chrome



- ☑ wall housing made from metal, highly polished decorative edge in chrome or polished brass
- ☑ frosted glass curved
- ☑ safety glass on the lamp

- ☑ luminaire ready for connection
- ☑ Not suitable for mounting on flammable material.
- ☑ color: chrome, brass



**DEC1000 | wall luminaire**

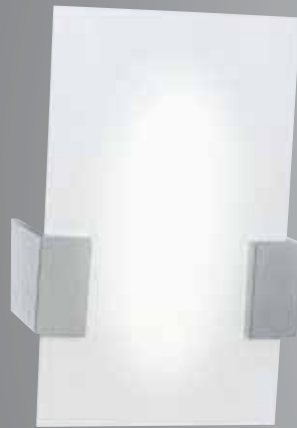
120V  
60 Hz

IP20

CE

LM	Wattage	Order No.	lb
☛ QT-DE11/12 / R 7s Contact gap: 2.9"	60/100 W	DEC1000	2.2

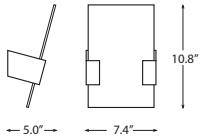
# Decco



Frosted glasses provide for style and brilliant light of the Decco-Series.

- ☑ wall bracket made from metal, glass brackets made from polished aluminium
- ☑ decorative glass pane frosted
- ☑ safety glass on the lamp
- ☑ lamp with double socket
- ☑ luminaire ready for connection

☑ Not suitable for mounting on flammable material.



## DEC 3000 | wall luminaire

120V 60 Hz	IP20	CE
---------------	------	----

LM	Wattage	Order No.	lb
QT-DE11/12 / R 7s	60/100/150 W	DEC 3000	2.9
Contact gap: 2.9"			

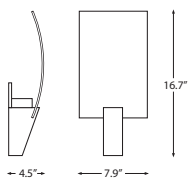


- ☑ decorative glass pane frosted, curved
- ☑ glass bracket made from aluminium
- ☑ suitable for cool beam lamps
- ☑ electronic transformer integral, luminaire ready for connection

☑ Not suitable for mounting on flammable material.  
☑ colour: chrome, brass

## DEC 2000 | wall luminaire

120V 60 Hz	IP20	CE
---------------	------	----

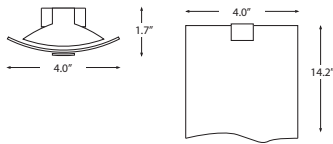


LM	Wattage	Order No.		lb
QR-CBC51 / GU 5.3 You can use IRC lamps	20/35 W	DEC 2000	Transformer	6.8



# Roma

- ☒ white glass frosted on both sides, curved
- ☒ wall and glass bracket made from metal
- ☒ ECG integral, 3-pole terminal block
- ☒ colour: alu, white



## ROM | wall luminaire



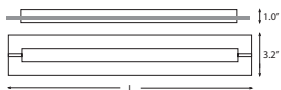
LM	Wattage	Order No.	LVK	⚡	lb
TC-L / 2G 11	1 x 18 W	ROM 1181	568	ECG	3.7



- ☒ luminaire for direct-indirect illumination, light distribution: 50% direct, 50% indirect
- ☒ luminaire housing made from high-grade aluminium and metal
- ☒ frosted toughened safety glass,

- sand-blasted on both sides, edges seamed and polished
- ☒ ECG integral, 3-pole terminal block
- ☒ Also available as ceiling luminaire! See page 550
- ☒ color: silver, white, anodised, RAL

## ROM 10 | wall luminaire



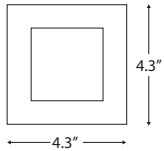
LM	Wattage	Order No.	LVK	⚡	lb	Length L
T 16 / G5	2 x 24 W	ROM 10. 224	520	ECG	4.4	27.9"
		ROM 10. 224 DIM/1- 10	520	ECG dim.	5.0	27.9"
	2 x 39 W	ROM 10. 239	520	ECG	5.7	39.7"
		ROM 10. 239 DIM/1- 10	520	ECG dim.	6.3	39.7"
		ROM 10. 239 DIM/DIG	520	ECG dim.	6.1	39.7"

# Piazza



- ☑ inclusive smallest compact fluorescent lamp with integral ECG
- ☑ recessed housing and front frame made from metal
- ☑ ready for connection and through-wiring

☑ color: silver, white, chrome, stainless steel



## PIA 100 | wall luminaire | acrylic protruding

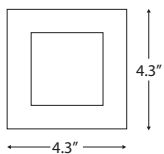
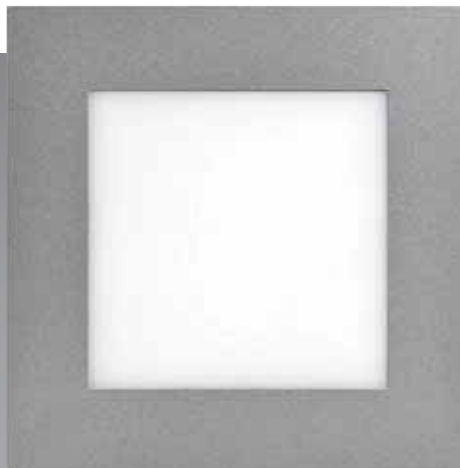
☑ white acrylic, 0.2" protruding

120V  
60 Hz

IP20

CE

LM	Wattage	Order No.	ET	LVK
T2 / GX 53 (MLF)	6 W	PIA 100.6	3.9"x3.9"	1.7" 367



## PIA 110 | wall luminaire | acrylic flush

☑ white acrylic, flush to front frame

120V  
60 Hz

IP20

CE

LM	Wattage	Order No.	ET	LVK
T2 / GX 53 (MLF)	6 W	PIA 110.6	3.9"x3.9"	1.7" 367

NEW



# Rocco

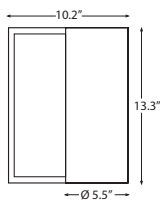
Delivery and variations on demand!



# Torpedo

luminaire for direct-indirect illumination, light distribution: 50% direct, 50% indirect  
 specular reflectors made from highest-grade aluminium

housing made from high-grade aluminium  
 ECG integral, 3-pole terminal block  
 color: anthracite, white



## Torpedo | wall luminaire



	LM	Wattage	Beam angle	Order No.	LVK	Light type	lb
	HIT-CE / G12	2 x35 W	15°	<a href="#">TORE 2351</a>	2 x143	ECG	10.6
		2 x70 W	15°	<a href="#">TORE 2701</a>	2 x143	ECG	10.6





# WEL

WEL Wall-recessed luminaires are ideal for the illumination of staircases, halls and floors. Two sizes with diverse reflectors are available. Simple installation.



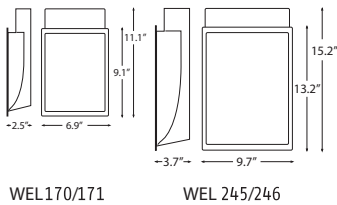
reflector matt



reflector corrugated

- ☑ wall recessed luminaire suitable for illumination of stairs and corridors close to the floor
- ☑ easy cavity wall installation via adjustable fastening hinges, wall-recessed plaster housing available as accessories

- ☑ recessed housing made from metal
- ☑ toughened safety glass on the lamp
- ☑ lamp position horizontal
- ☑ ECG integral, 3-pole terminal block
- ☑ color: silver, white



WEL170/171

WEL 245/246



**WEL170/245 | wall recessed luminaire | reflector matt**

ECG 120V 60 Hz IP20 CE

☑ reflector with matt structure made from aluminium, exchangeable

	LM	Wattage	⚡	🔧	ET	Order No.	LVK	lb
	TC-DEL / G 24q-1	1 x10/13 W	ECG	8.5" x 6.3"	2.5"	<a href="#">WEL 170.130</a>	527	3.1
	QT-DE 11/12 / R7s Contact gap: 2.9"	1 x60 W		8.5" x 6.3"	2.5"	<a href="#">WEL 170.100</a>	527	2.6
	TC-DEL / G 24q-1	1 x10/13 W	ECG	12.6" x 9.3"	3.7"	<a href="#">WEL 245.130</a>	525	5.9
	TC-DEL / G 24q-2	1 x18 W	ECG	12.6" x 9.3"	3.7"	<a href="#">WEL 245.180</a>	525	6.4
	HIT-DE-CE / RX7s	1 x70 W	ECG	12.6" x 9.3"	3.7"	<a href="#">WEL 245.700</a>	525	5.9
	QT 32/m / E27	1 x75 W		12.6" x 9.3"	3.7"	<a href="#">WEL 245.150</a>	525	5.3

**WEL171/246 | wall recessed luminaire | reflector corrugated**

ECG 120V 60 Hz IP20 CE

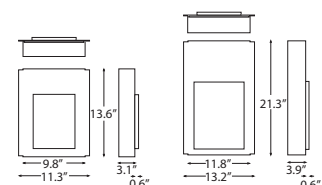
☑ corrugated reflector with matt structure made from aluminium, exchangeable

	LM	Wattage	⚡	🔧	ET	Order No.	LVK	lb
	TC-DEL / G 24q-1	1 x10/13 W	ECG	8.5" x 6.3"	2.5"	<a href="#">WEL 171.130</a>	528	3.1
	QT-DE 11/12 / R7s Contact gap: 2.9"	1 x60 W		8.5" x 6.3"	2.5"	<a href="#">WEL 171.100</a>	528	2.6
	TC-DEL / G 24q-1	1 x10/13 W	ECG	12.6" x 9.3"	3.7"	<a href="#">WEL 246.130</a>	526	5.9
	TC-DEL / G 24q-2	1 x18 W	ECG	12.6" x 9.3"	3.7"	<a href="#">WEL 246.180</a>	526	6.4
	HIT-DE-CE / RX7s	1 x70 W	ECG	12.6" x 9.3"	3.7"	<a href="#">WEL 246.700</a>	526	5.9
	QT 32/m / E27	1 x75 W		12.6" x 9.3"	3.7"	<a href="#">WEL 246.150</a>	526	5.3

**WEL | wall-recessed plaster housings**

☑ plaster housing made from metal

ET	🔧	Order No.	lb
3.7"	13.6" x 11.3"	<a href="#">WEL 170.00</a>	3.5
4.5"	21.3" x 13.2"	<a href="#">WEL 245.00</a>	4.8



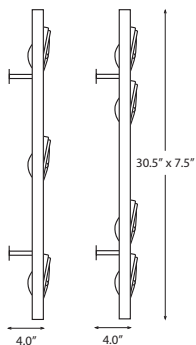
# Scene®



Gimbal lighting technique horizontally mounted, movable light heads with different light sources.

- ☑ luminaire pivots through wall bracket with joint
- ☑ light heads move in all directions via gimbals
- ☑ support rails made from high-grade aluminium profile, covers made from metal, light heads made from die-cast and aluminium

- ☑ specular reflectors made from highest-grade aluminium
- ☑ electronic transformers integral, luminaire ready for connection, transparent connection cable
- ☑ color: silver, RAL



SCA405...SCA 404...

## SCA | wall luminaire | 3- and 4-lamp

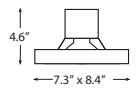



LM	Wattage	Order No.	LVK	▲	⚡
<b>QT12 / GY6.35</b> UV filter	4 x50 W	<a href="#">SCA404.100</a>	4 x143	12°	Transformer
	3 x100 W	<a href="#">SCA405.100</a>	3 x143	12°	Transformer
<b>QR111 / G53</b>	4 x50 W	<a href="#">SCA404.110</a>			Transformer
	3 x100 W	<a href="#">SCA405.110</a>			Transformer



### SCW2 | wall luminaire | 1-lamp

- ☒ light head moves in all directions via gimbals
- ☒ luminaire made from high-grade aluminium
- ☒ luminaire ready for connection
- ☒ color: silver, RAL

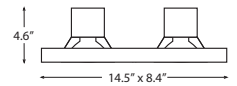
120V  
60 Hz


LM	Wattage	Order No.	lb
 QPAR 30 / E 27	1 x 75 W	SCW2.1100	2.4



### SCW2 | wall luminaire | 2-lamp

- ☒ light heads move in all directions via gimbals
- ☒ luminaire made from high-grade aluminium
- ☒ luminaire ready for connection
- ☒ color: silver, RAL

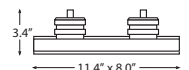
120V  
60 Hz



LM	Wattage	Order No.	lb
 QPAR 30 / E 27	2 x 75 W	SCW2.1200	4.6



### SCW3 | wall luminaire | 2-lamp

- ☒ light heads move in all directions via gimbals
- ☒ luminaire made from high-grade aluminium
- ☒ electronic transformers integral, luminaire ready for connection
- ☒ color: silver, RAL

120V  
12V  
60 Hz

LM	Wattage	Order No.		lb
 QR-CBC 51 / GU5.3	2 x 50 W	SCW3.2200	Transformer	4.6



# solavanti lighting



SOLAVANTI LIGHTING, LLC

Dallas, Texas

Tel.: 1.866.356.4458

Fax: 1.866.516.1924

[www.solavantilighting.com](http://www.solavantilighting.com)